

## [CDR TYPE] 面實裝 POWER CHOKE CORES 鍍銀型

### INDUCTANCE VS. CURRENT CURVE

Inductance Range: (10  $\mu$ H~820  $\mu$ H)

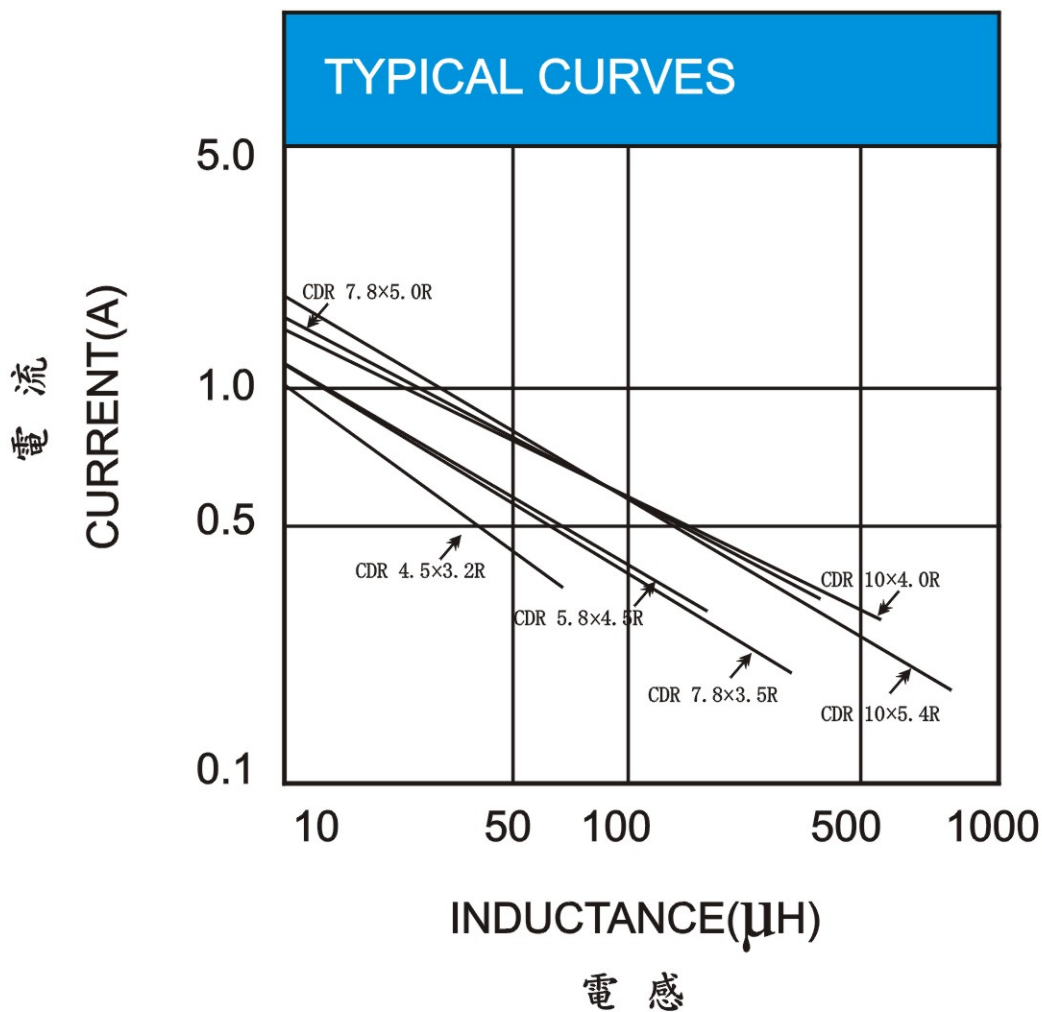
TYPICAL ELECTRICAL CHARACTERISTICS CURVE:

CDR 4.5X3.2 R ~ CDR 10X5.4 R

TEST INSTRUMENT ZENTECH 101 & 301A

INDUCTANCE VS. CURRENT (REFERENCE)

電感值 - 電流(參考值)

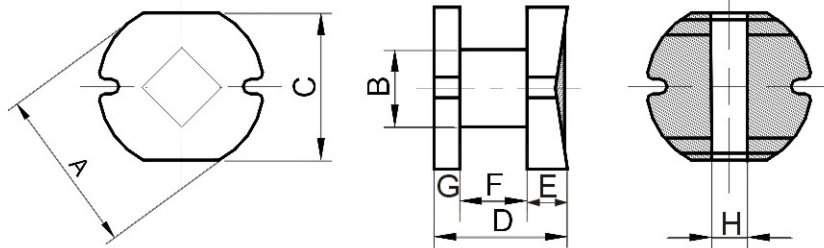


## [CDR TYPE]

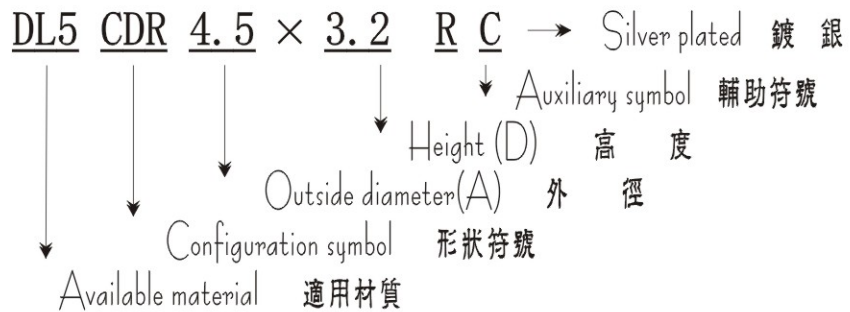
Silver Plated Type



## 面實裝 POWER CHOKE CORES 鍍銀型



## PRODUCT IDENTIFICATION 產品識別碼



### FEATURES 特長

提供高飽和磁通密度，  
耐大電流，低阻抗之表面  
三層電鍍處理之表面粘著  
磁芯。

Three layers of  
electrode treatment  
surface mount cores  
offer high Bm, low DC  
resistance, power  
choke.

### 產品尺寸標準:

品名	DR:A	B	C	D	E	F	G	H
CDR3.5*1.1RC	3.50±0.1	1.7±0.15	3.0±0.1	1.1±0.15	0.45REF	0.3±0.15	0.35±0.1	1.0±0.3
CDR3.5*2.1RC	3.50±0.1	1.5±0.15	3.0±0.1	2.1±0.15	0.65REF	1.00±0.1	0.45±0.1	1.0±0.3
CDR4.5*1.1RC	4.50±0.1	2.1±0.15	4.1±0.1	1.1±0.15	0.35REF	0.40±0.1	0.35±0.1	1.4±0.3
CDR4.5*2RC	4.50±0.1	1.2±0.15	4.1±0.15	2.0±0.15	0.7REF	0.80±0.1	0.50±0.1	1.4±0.3
CDR4.5*3.2RC	4.50±0.1	2.1±0.15	4.1±0.15	3.2±0.15	1.1REF	1.4±0.15	0.70±0.1	1.4±0.3
CDR5.8*1.1RC	5.8±0.15	2.5±0.15	5.2±0.15	1.1±0.15	0.35REF	0.40±0.1	0.35±0.1	1.5±0.3
CDR5.8*2.5RC	5.8±0.15	2.5±0.15	5.2±0.15	2.0±0.15	0.5REF	0.90±0.1	0.60±0.1	1.5±0.3
CDR5.8*3RC	5.8±0.15	2.5±0.15	5.2±0.15	3.0±0.15	0.8REF	1.5±0.15	0.70±0.1	1.5±0.3
CDR5.8*4.5RC	5.8±0.15	2.5±0.15	5.2±0.15	4.5±0.15	1.3REF	2.4±0.15	0.80±0.1	1.5±0.3
CDR7.8*3.5RC	7.8±0.15	3.0±0.15	7.0±0.15	3.5±0.15	1.2REF	1.5±0.15	0.8±0.15	2.5±0.3
CDR7.8*5RC	7.8±0.15	3.0±0.15	7.0±0.15	5.0±0.15	1.4REF	2.6±0.15	1.0±0.15	2.5±0.3
CDR10*3RC	10.0±0.2	3.4±0.15	9.0±0.15	3.0±0.15	1.1REF	1.2±0.15	0.70±0.1	3.0±0.3
CDR10*4RC	10.0±0.2	4.0±0.15	9.0±0.15	4.0±0.15	1.2REF	1.7±0.15	1.1±0.15	3.0±0.3
CDR10*5.4RC	10.0±0.2	4.0±0.15	9.0±0.15	5.4±0.2	1.6REF	2.6±0.15	1.2±0.15	3.0±0.3
CDR10*6.5RC	10.0±0.2	5.0±0.15	9.0±0.15	6.5±0.2	1.4REF	4.0±0.15	1.1±0.15	3.0±0.3
CDR10*8RC	10.0±0.2	5.0±0.15	9.0±0.15	8.0±0.2	1.5REF	5.5±0.15	1.0±0.15	3.0±0.3
CDR10*9RC	10.0±0.2	5.0±0.15	9.0±0.15	9.0±0.2	1.5REF	6.0±0.15	1.45±0.15	3.0±0.3

### USEAGE 用途

小型通信器  
手提電腦  
VTR照相機  
液晶電視  
Portable communication  
equipment;  
Notebook PC;  
Camcorder;  
LCD Television Set.

## [CDR TYPE]

## 面實裝 POWER CHOKE CORES 鍍銀型

Silver Plated Type

STANDARD SPECIFICATIONS OF CDR POWER CHOKE CORES

面實裝鍍銀型, 電感值, 直流抵抗, 定格電流規格表

Test Freq.(L): 測試頻率

1.0~8.2μH(7.96MHz)  
10~82μH(2.52MHz)  
100~820μH(1KHz)

Tolerance of Inductance:  
電感值公差

CDR 4.5x3.2 RC:  
1.0~27μH±20%  
33~68μH±10%

CDR 5.8x4.5 RC:  
10~27μH±20%  
33~47μH±15%  
56~220μH±10%

CDR 7.8x3.5 RC:  
10~47μH±20%  
56~330μH±10%

CDR 7.8x5.0 RC:  
10~470μH±10%

CDR 10x4.0 RC:  
10~47μH±20%  
56~560μH±10%

CDR 10x5.4 RC:  
10~39μH±20%  
47~820μH±10%

Inductance 電感 L(μH)	DCR(Ω)Max. 直流抵抗						Rated D.C.Current(A) 定格電流					
	CDR 4.5x3.2RC	CDR 5.8x4.5RC	CDR 7.8x3.5RC	CDR 7.8x5.0RC	CDR 10x4.0RC	CDR 10x5.4RC	CDR 4.5x3.2RC	CDR 5.8x4.5RC	CDR 7.8x3.5RC	CDR 7.8x5.0RC	CDR 10x4.0RC	CDR 10x5.4RC
1.0	0.049						2.56					
1.4	0.057						2.52					
1.8	0.064						1.95					
2.2	0.072						1.75					
2.7	0.079						1.58					
3.3	0.087						1.44					
3.9	0.094						1.33					
4.7	0.109						1.15					
5.6	0.126						0.99					
6.8	0.132						0.95					
8.2	0.147						0.84					
10	0.182	0.10	0.08	0.07	0.05	0.06	1.04	1.44	1.44	2.30	2.38	2.60
12	0.210	0.12	0.09	0.08	0.06	0.07	0.97	1.40	1.39	2.00	2.13	2.45
15	0.235	0.14	0.10	0.09	0.07	0.08	0.85	1.30	1.24	1.80	1.87	2.27
18	0.338	0.15	0.11	0.10	0.08	0.09	0.74	1.23	1.12	1.60	1.73	2.15
22	0.378	0.18	0.13	0.11	0.09	0.10	0.68	1.11	1.07	1.50	1.60	1.95
27	0.552	0.20	0.15	0.12	0.10	0.11	0.62	0.97	0.94	1.30	1.44	1.76
33	0.540	0.23	0.17	0.13	0.12	0.12	0.56	0.88	0.85	1.20	1.26	1.50
39	0.587	0.32	0.22	0.16	0.15	0.14	0.52	0.80	0.74	1.10	1.20	1.37
47	0.884	0.37	0.25	0.18	0.17	0.17	0.44	0.72	0.68	1.10	1.10	1.28
56	0.937	0.42	0.28	0.24	0.20	0.19	0.42	0.68	0.64	0.94	1.01	1.17
68	1.117	0.46	0.33	0.28	0.22	0.22	0.37	0.61	0.59	0.85	0.91	1.11
82		0.60	0.41	0.37	0.25	0.25		0.58	0.54	0.78	0.85	1.00
100		0.70	0.48	0.43	0.34	0.35		0.52	0.51	0.72	0.74	0.97
120		0.93	0.54	0.47	0.40	0.40		0.48	0.49	0.66	0.69	0.89
150		1.10	0.75	0.64	0.54	0.47		0.40	0.40	0.58	0.61	0.78
180		1.38	1.02	0.71	0.62	0.63		0.38	0.36	0.51	0.56	0.72
220		1.57	1.20	0.96	0.72	0.73		0.35	0.31	0.49	0.53	0.66
270			1.31	1.11	0.95	0.97			0.29	0.42	0.45	0.57
330			1.50	1.26	1.10	1.15			0.28	0.40	0.42	0.52
390				1.77	1.24	1.30				0.36	0.38	0.48
470				1.96	1.53	1.48				0.34	0.35	0.42
560					1.90	1.90					0.32	0.33
680						2.45						0.28
820						2.55						0.24
1000						3.00						
1200						3.50						

- ▶ This indicates the value of current when the inductance is 10% lower than its initial value at D.C. Superposition or the value of D.C. Current when temperature rise  $\Delta t = 40^\circ\text{C}$  whichever is lower.
- ▶ For any CDR core requirement not listed in the catalog, please feel free to contact with us for more information.